



# Vendor Conference

## Project Management Consultant (PMC)

Indonesia Health Systems Strengthening Project (IHSS)

Jakarta, March 16, 2026



# Background



## Funding & Objectives

- Government of Indonesia (Ministry of Health) secured Foreign Loans (PLN) from World Bank (WB), AIIB, ADB, and IsDB.
- **Objective:** Enhance functional equipment availability & increase public health service utilization across Indonesia.

**Total Funding: EUR 3.72 billion**  
(approx. IDR 63.05 trillion)

## Project Components



**1. SIHREN**  
(Strengthening  
Indonesia's Healthcare  
Referral Network)



**2. SOPHI**  
(Strengthening of  
Primary Healthcare in  
Indonesia)



**3. InPULS**  
(Indonesia Public Health  
Laboratory System  
Strengthening)



## Implementation & Scope (2024–2029)



**535**  
District/City  
Hospitals



**47**  
Provincial  
Hospitals







**14,000**  
Primary Healthcare  
Facilities



**431**  
Laboratories

# IHSS Project File

	Strengthening of Primary Healthcare in Indonesia (SOPHI)	Indonesia-Public Health Laboratory System Strengthening (InPULS)	Strengthening Indonesia's Health Care Referral Network (SIHREN)	
<b>Tujuan Penguatan</b>	<b>Jejaring Layanan Primer</b> (Puskesmas, Pustu, dan Posyandu)	<b>Jejaring Laboratorium Kesehatan Masyarakat</b> (Labkesmas)	<b>RS Jejaring Rujukan</b> (Penyakit Kanker, Jantung, Stroke, Uronefroplogi dan KIA)	
<b>Penerima Manfaat</b>	<ul style="list-style-type: none"> <li>• 10.323 Puskesmas</li> <li>• 81.833 Puskesmas Pembantu</li> <li>• 301.068 Posyandu</li> </ul>	<ul style="list-style-type: none"> <li>• 514 Labkesmas Tier-2</li> <li>• 38 Labkesmas Tier-3</li> <li>• 14 Labkesmas Tier-4</li> <li>• 2 Labkesmas Tier-5</li> </ul>	<ul style="list-style-type: none"> <li>• 22 RS <i>Paripurna</i> (Nasional)</li> <li>• 47 RS <i>Utama</i> (Provinsi)</li> <li>• 514 RS <i>Madya</i> (Kab/Kota)</li> </ul>	
<b>Sumber PLN</b>				
<b>Kategori Pembiayaan</b>	<ul style="list-style-type: none"> <li>• Co-financing</li> </ul>	<ul style="list-style-type: none"> <li>• Co-financing</li> </ul>	Parallel Financing	Co- Financing
<b>% Pendanaan</b>	<ul style="list-style-type: none"> <li>• <b>WB</b> 41,4%</li> <li>• <b>AIIB</b> 35,1%</li> <li>• <b>ADB</b> 23,5%</li> </ul>	<ul style="list-style-type: none"> <li>• <b>WB</b> 48,8%</li> <li>• <b>ADB</b> 51,2%</li> </ul>	<ul style="list-style-type: none"> <li>• <b>IsDB</b> 100%</li> </ul>	<ul style="list-style-type: none"> <li>• <b>WB</b> 48,7%</li> <li>• <b>AIIB</b> 51,3%</li> </ul>
<b>Mekanisme Pembayaran</b>	<ul style="list-style-type: none"> <li>• <i>Full Payment</i></li> <li>• <i>Terms of Payment-World Bank</i></li> </ul>	<ul style="list-style-type: none"> <li>• <i>Full Payment</i></li> <li>• <i>Terms of Payment-World Bank</i></li> </ul>	<ul style="list-style-type: none"> <li>• <i>Full Payment</i></li> <li>• <i>Terms of Payment-World Bank</i></li> <li>• <i>Terms of Payment-IsDB</i></li> </ul>	

# Implementation Period



## Preparation (2022 s/d 2023)

- DIPK/DUK,
- Blue Book
- Green Book
- List of Activities (DK)
- Meeting Inter-units
- Negotiaiton,
- LA Signed
- AWPB
- DIPA
- Special Account
- DIPA Revision

Ket : DIPK (List of proposed activities), DUK (List of Activity proposal))



## Central Implementation (2024 s/d 2027)

*Med Eq  
Procurement*



## Acceptance & Utilisation at Subnational (2025 s/d dst)

Equipment is accepted & utilized at Facilities

PMC is being prepared for Subnational Monitoring

## Evaluation in 2029 (End of Project)



# Project Update



## Massive Equipment Procurement

Targeted improvements across 535 district and 47 provincial hospitals, 14,000 primary healthcare facilities, and 431 laboratories to ensure equitable health access.



## 2026 Procurement Surge

Following a 1.9% realization through 2025, contract values are projected to jump to 23.8% in 2026, led significantly by IsDB (55.79%) and AIIB (23.13%) allocations.



## Operational DIOU Focus

A critical need to accelerate procurement and supervise the Distribution, Installation, Operation, and Utilization (DIOU) of medical equipment across 349 priority districts/cities.



## Governance & Global Oversight

Deployment of a global management consulting firm to provide strategic oversight for the 4 PMUs and CPMU, ensuring international best practices in monitoring and implementation.

# Scope of Work

## Central PMC

1. Strategic Management Support (Financial Risk Mitigation, Procurement Optimization, Contract Management, Oversight to PMUs, CPU & CPMU)
2. Integrating Information Systems into ASPAK
3. Monitoring Medical Equipment in Hospitals via Control Room
4. Performing PMC Subnational Monitoring Functions

## Regional PMC

1. Data Consolidation & Implement tailored solution for Improving Health Facility Readiness & Distribution
2. Data Consolidation & Implement actions for Improving Medical Equipment Operation & Utilization
3. Data Consolidation & Implement required actions for Environmental & Social Safeguards, Equity, & Gender

# Scope of Work

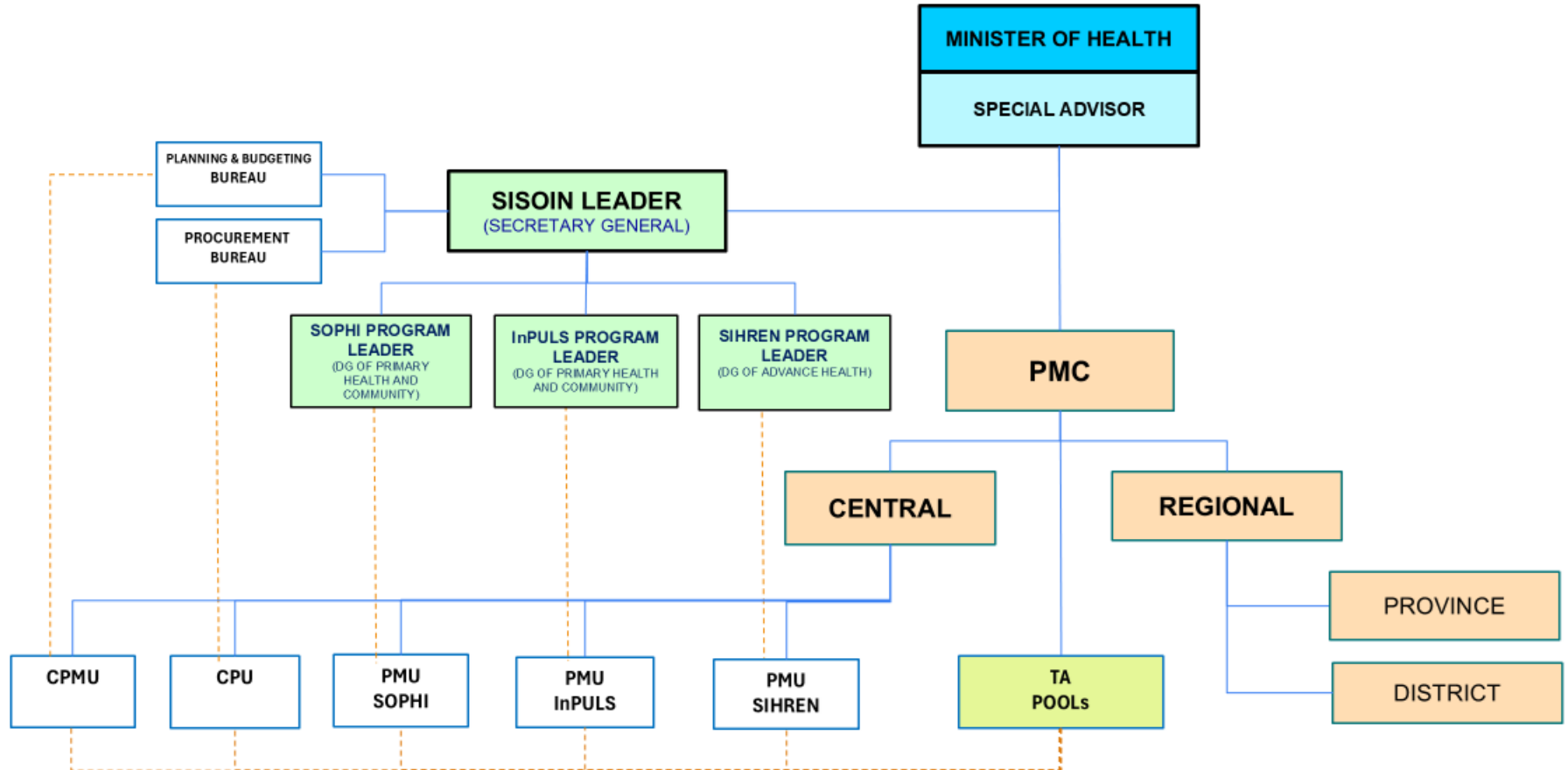
## Province PMC

1. Identification of bottlenecks and implement tailored solutions for site readiness & distribution
2. Identification of bottlenecks and Implement actions for improving operation and utilization

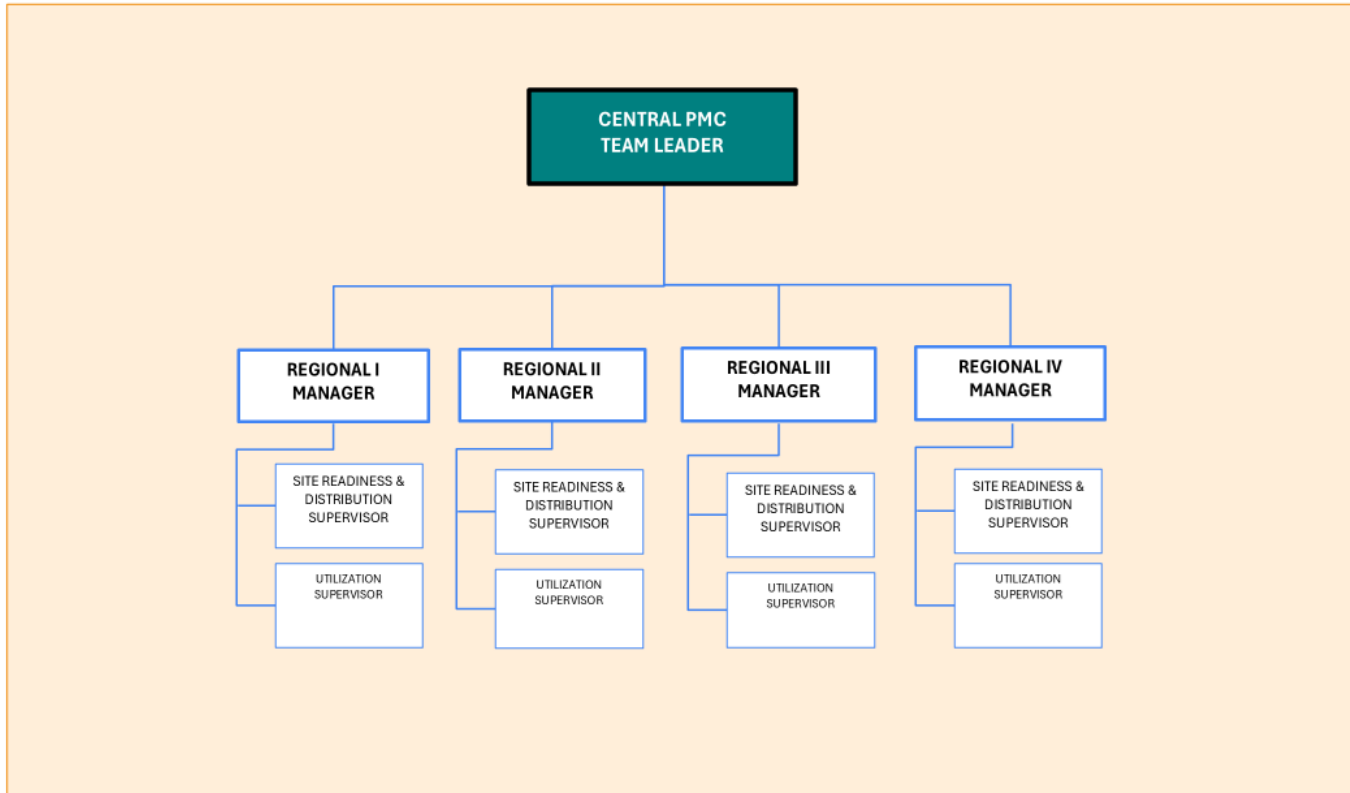
## District/City PMC

1. Direct inspection of site readiness to accept equipments and entry data to ASPAK
2. Direct monitoring of distribution, installation, and commissioning (BAST/BASTO)
3. Direct observation of equipment operation and utilization (facilitate BAPETEN permit & BPJSK credentialing)
4. Overseeing Environment & Social Safeguard at health facility level

# ORGANIZATIONAL STRUCTURE OF THE PROJECT MANAGEMENT CONSULTANT (PMC)



# Regional PMC

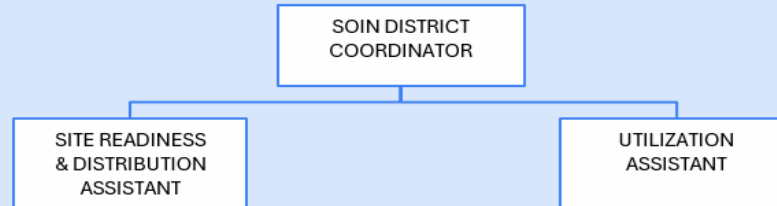


# Sub National PMC

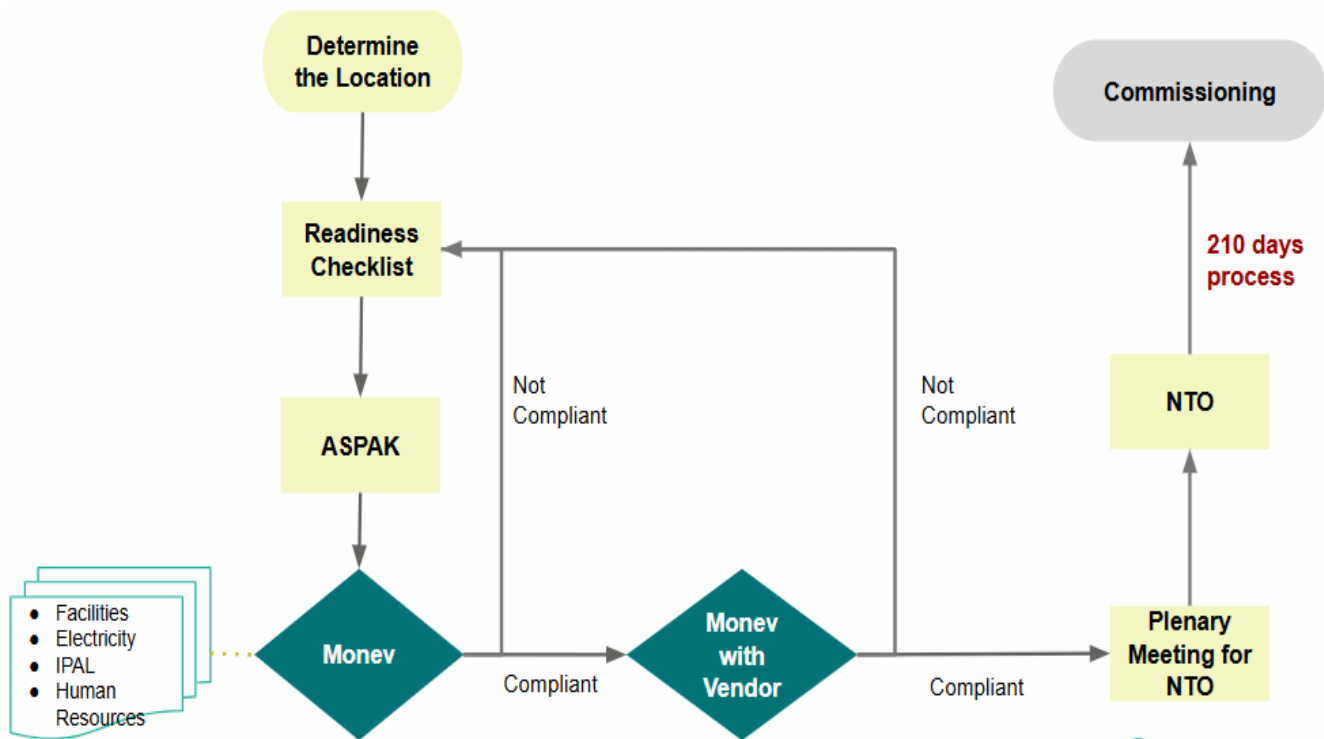
## PROVINCE (Structure in Each Province)



## DISTRICT (Structure in Each District)



# Procurement & NTO Process



# List of Distributed Medical Equipment

Projects	Medical Equipment	Distributed	Health Facilities	Districts
SOPHI	Infant T Piece	409	405	69
SOPHI	Dental Chair	728	718	235
SOPHI	Centrifuge	53	53	12
SOPHI	USG 2D	89	89	11
SIHREN	Cath Lab	49	49	49
SIHREN	MRI	6	6	6
SIHREN	Mammography	23	23	23
SIHREN	CT-Scan	20	20	20
<b>TOTAL</b>		<b>1,377</b>	<b>1,237*)</b>	<b>335</b>

Notes: \*) 85 Hospitals & 1.152 Primary Health Centers

## Procurement Package

Project	Package	Market	Method	Total Estimated Cost
IHSS	Project Management Consultant	International	QCBS	USD 23,224,121



# Thank You

Jl. H. R. Rasuna Said No.Kav 4-9 Blok X-5, RT.1/RW.2, Kuningan, Kecamatan  
Setiabudi, Kota Jakarta Selatan, Daerah Khusus Ibukota Jakarta 12950



@KemenkesRI; @lifeatkemenkes



[www.kemkes.go.id](http://www.kemkes.go.id)



Kementerian Kesehatan RI

